

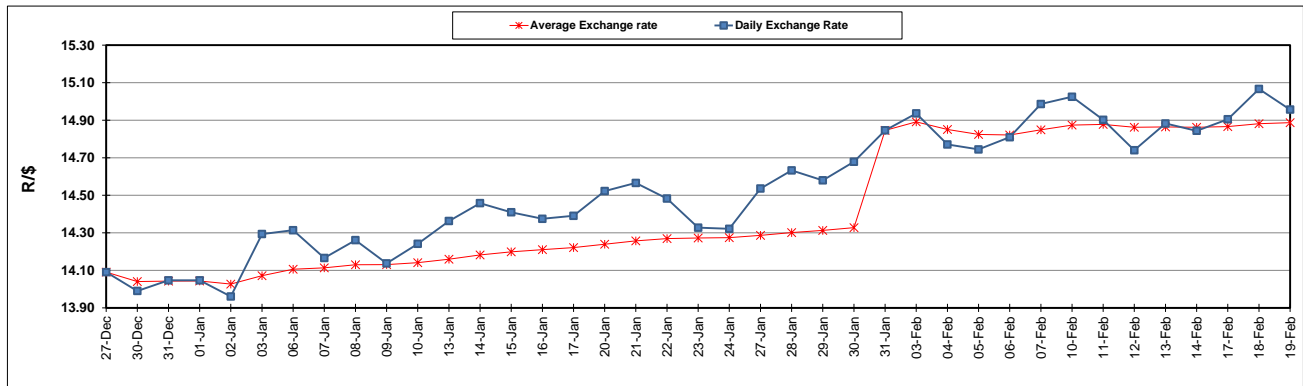
	PETROL 95 ULP	PETROL 93 ULP & LRP	DIESEL 0.05%	DIESEL 0.005%	ILL. PAR.
GAUTENG PUMP PRICE (SA c/l) AS FROM 05/02/2020	1,603.000	1,571.000	-	-	-
WHOLESALE PRICE (SA c/l) AS FROM 05/02/2020	-	-	1,457.260	1,462.660	924.728
SINGLE NATIONAL MAXIMUM RETAIL PRICE	-	-	-	-	1,176.000
BASIC FUEL PRICE - 19/02/2020 (SA c/l)	693.371	680.337	698.627	703.067	680.007
PRESS RELEASE CONTRIBUTION TO BFP 05/02/2020 - 19/02/2020 (SA c/l)	686.970	664.970	737.630	743.030	734.128
UNIT OVER/(UNDER) RECOVERY - 19/02/2020 (SA c/l)	(6.401)	(15.367)	39.003	39.963	54.121
AVERAGE BASIC FUEL PRICE 31/01/2020 - 19/02/2020	670.476	658.744	687.276	693.186	670.808
AVERAGE UNIT OVER/(UNDER) RECOVERY 31/01/2020 - 19/02/2020	19.280	9.012	51.425	50.915	63.963

### ANALYSIS MOVEMENT OF AVERAGE OVER/(UNDER) RECOVERY

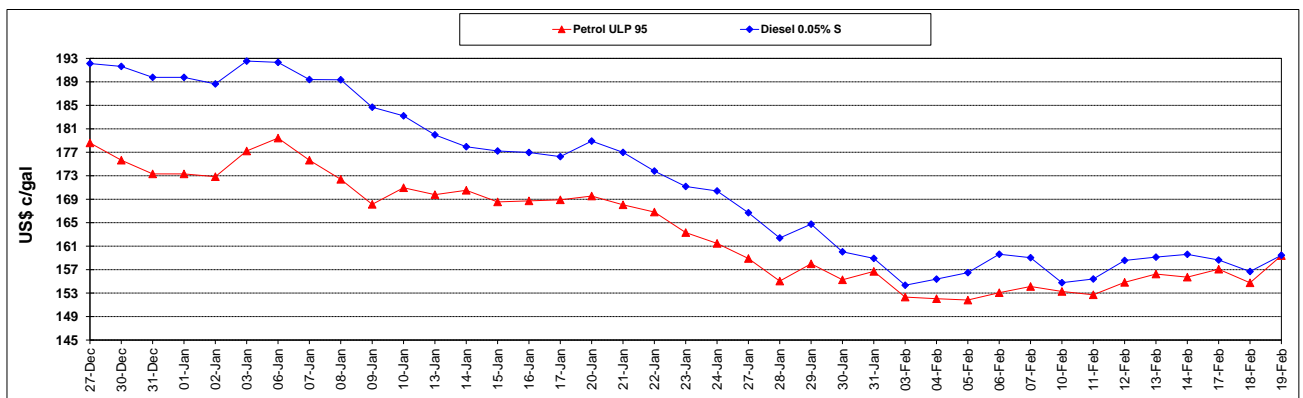
	PETROL 95	PETROL 93	DIESEL 0.05%	DIESEL 0.005%	ILL. PAR.
- MOVEMENT IN INTERNATIONAL PRODUCT PRICES	44.465	33.757	77.241	76.953	89.161
- MOVEMENT IN EXCHANGE RATE	(25.185)	(24.745)	(25.816)	(26.038)	(25.198)
AVERAGE UNIT OVER/(UNDER) RECOVERY 31/01/2020 - 19/02/2020	19.280	9.012	51.425	50.915	63.963

R/\$ EXCHANGE RATE - (R/\$14.9566 - 19/02/2020)

### EXCHANGE RATE USED IN BASIC FUEL PRICE



### INTERNATIONAL PRODUCT PRICES OF BASKET USED IN BASIC FUEL PRICE



### BASIC FUEL PRICE IN SA CENTS PER LITRE

